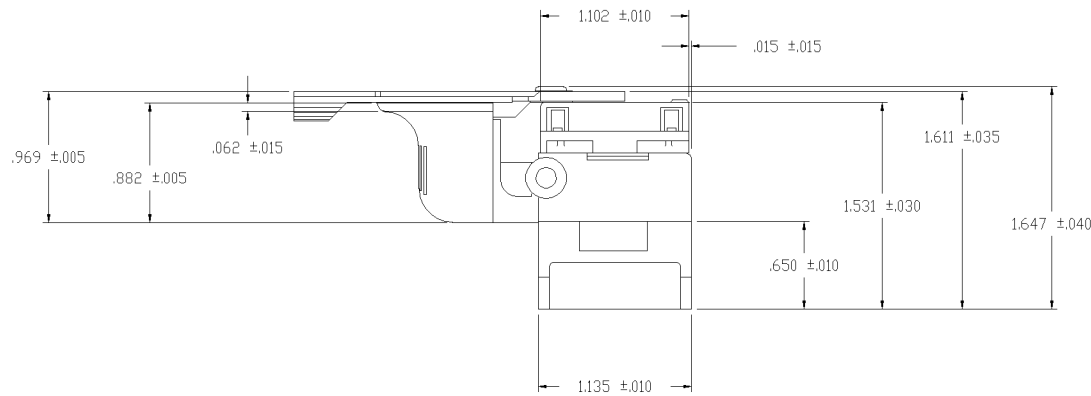
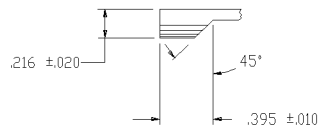
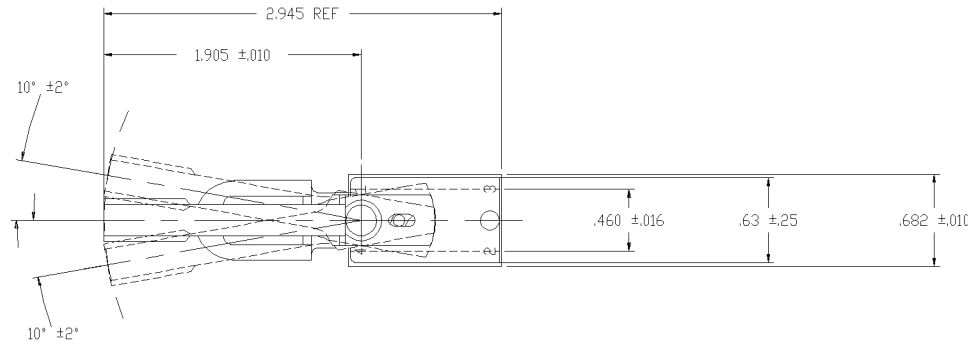
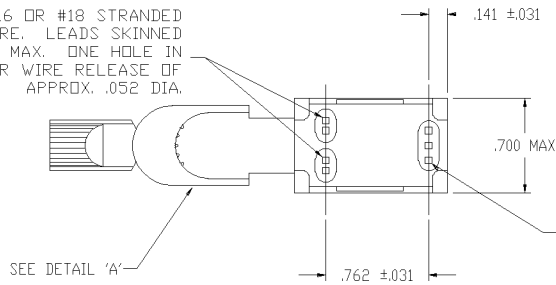


THIS DRAWING IS UNPUBLISHED. RELEASED FOR PUBLICATION  
 © COPYRIGHT BY TYCO ELECTRONICS CORPORATION. ALL RIGHTS RESERVED.

LOC	DIST	REVISIONS			
P	LTR	DESCRIPTION	DATE	OWN	APVD
C		ECOG3G-0070-03	17NOV03	MB	RB

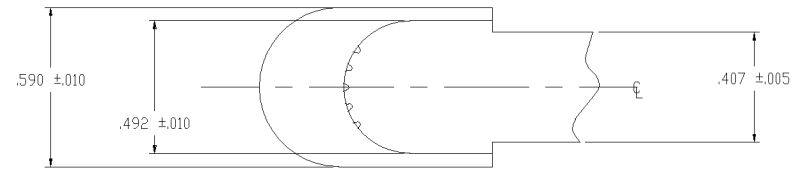


2 HOLES FOR #16 OR #18 STRANDED TIN DIPPED WIRE. LEADS SKINNED .250 MIN TO .312 MAX. ONE HOLE IN EACH RECESS FOR WIRE RELEASE OF APPROX. .052 DIA.



2 OUTER HOLES FOR #16 OR #18 STRANDED, TIN DIPPED WIRE. LEADS TO BE SKINNED .250 MIN TO .375 MAX. CENTER HOLE IS FOR WIRE RELEASE OF APPROX. .052 DIA.

1. LEAD STRIP LENGTH FOR REVERSING SWITCH TO BE .250 +.032 -.016.
2. 3 RECESSES IN BASE WILL ACCEPT MAX DIMENSION OF .120 DIA. (OVER INSULATION).



DETAIL A

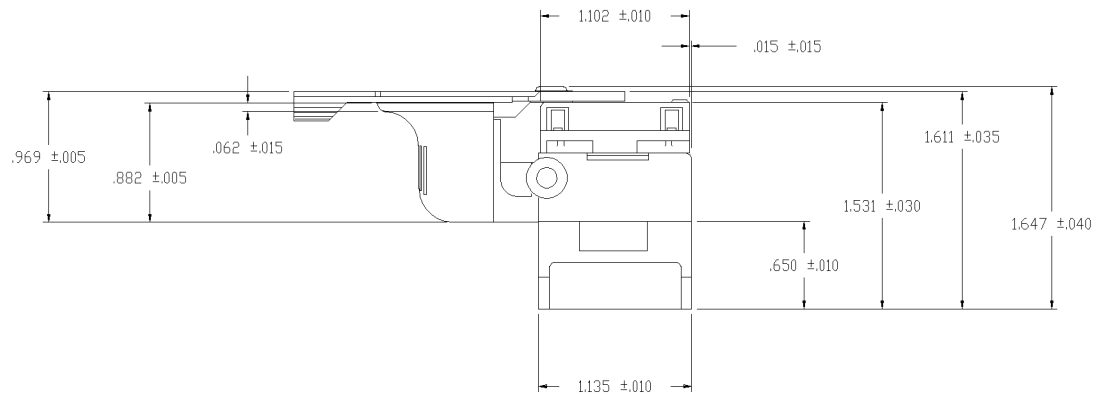
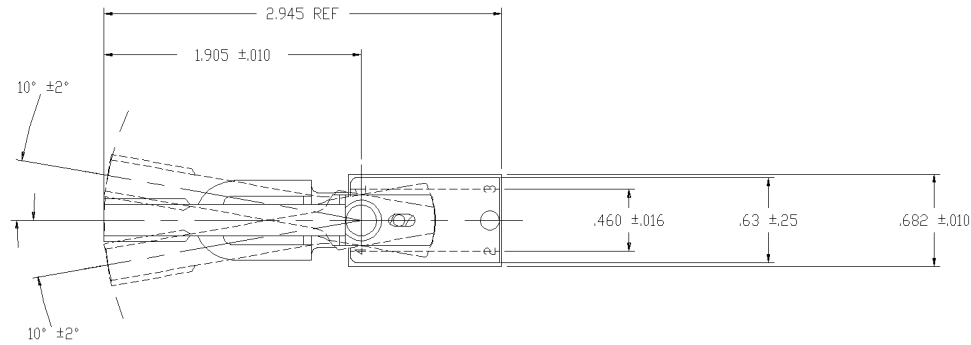
TYCO NO. 1520265-3 (ARAB NO. 8907K216) TYCO NO. 1520265-4 (ARAB NO. 8907K220) ~~TYCO NO. 1-1520265-2 (ARAB NO. 8907K436)~~

90-14583

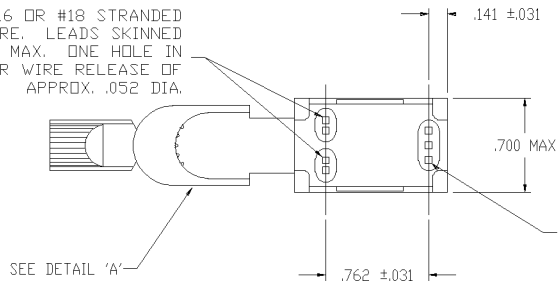
THIS DRAWING IS A CONTROLLED DOCUMENT.		DWN W. Leonard	30JUN88	<b>tyco</b> Electronics	Tyco Electronics Corporation Arab, AL 35016	
DIMENSIONS: INCHES		CHK E. WESOLEK	08JUL88		NAME N. COLEMAN	UTILITY TRIGGER TOOL HANDLE SWITCH WITH REVERSING 6A 125 VAC / 3A 250 VAC
TOLERANCES UNLESS OTHERWISE SPECIFIED:		APVD N. COLEMAN	08JUL88	PRODUCT SPEC	SIZE A2	CAGE CODE 00779
0 PLC ± - 1 PLC ± - 2 PLC ± - 3 PLC ± - 4 PLC ± -		APPLICATION SPEC		DRAWING NO 1520265	RESTRICTED TO	
MATERIAL -		FINISH -	WEIGHT -	CUSTOMER DRAWING	SCALE 1:1	SHEET 1 OF 10
				REV C		

THIS DRAWING IS UNPUBLISHED.  
 RELEASED FOR PUBLICATION  
 BY TYCO ELECTRONICS CORPORATION. ALL RIGHTS RESERVED.

LOC	DIST	REVISIONS					
AD	00	P	LTR	DESCRIPTION	DATE	OWN	APVD
-	-	-	-	SEE SHEET 1	-	-	-

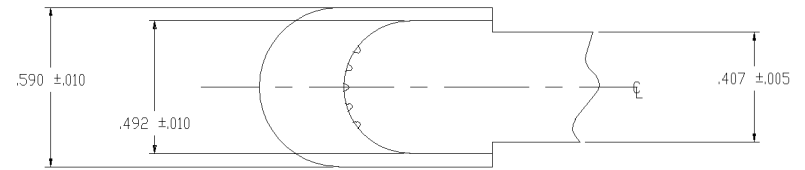


2 HOLES FOR #16 OR #18 STRANDED TIN DIPPED WIRE. LEADS SKINNED .250 MIN TO .312 MAX. ONE HOLE IN EACH RECESS FOR WIRE RELEASE OF APPROX. .052 DIA.



2 OUTER HOLES FOR #16 OR #18 STRANDED, TIN DIPPED WIRE. LEADS TO BE SKINNED .250 MIN TO .375 MAX. CENTER HOLE IS FOR WIRE RELEASE OF APPROX. .052 DIA.

1. LEAD STRIP LENGTH FOR REVERSING SWITCH TO BE .250 +.032 -.016.
2. 3 RECESSES IN BASE WILL ACCEPT MAX DIMENSION OF .120 DIA. (OVER INSULATION).



DETAIL A

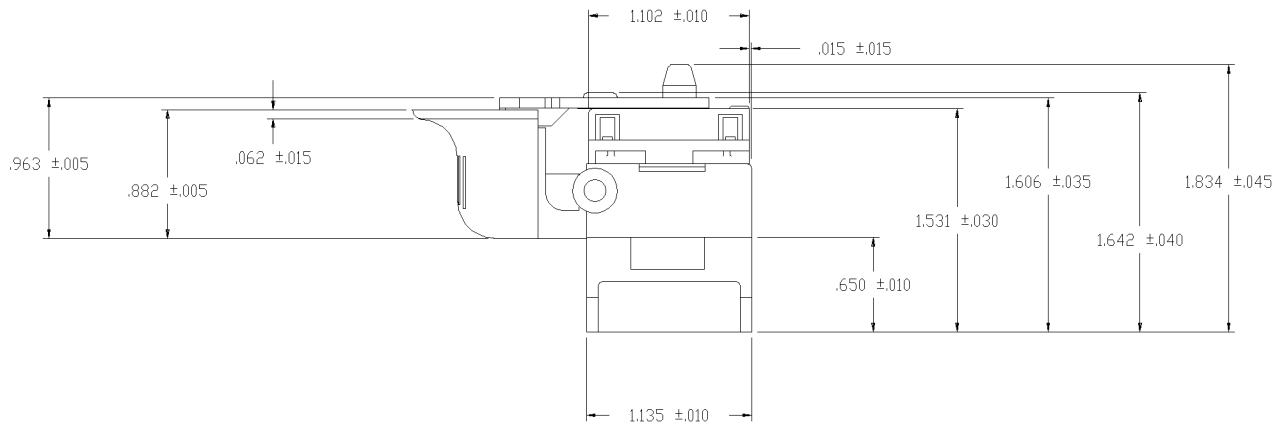
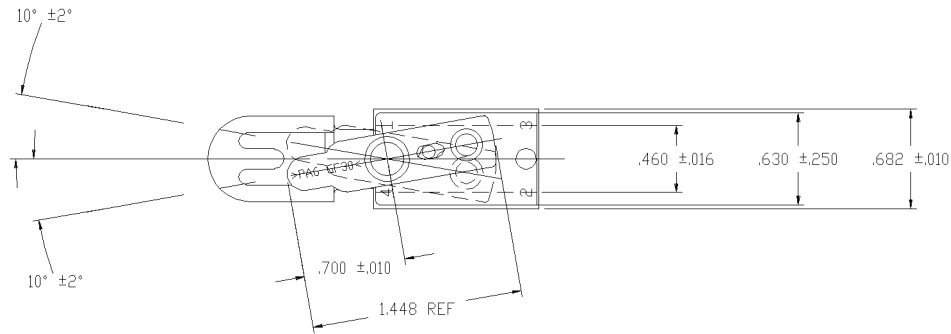
TYCO NO. 1520265-2  
 (ARAB NO. 8332K7)

91-545

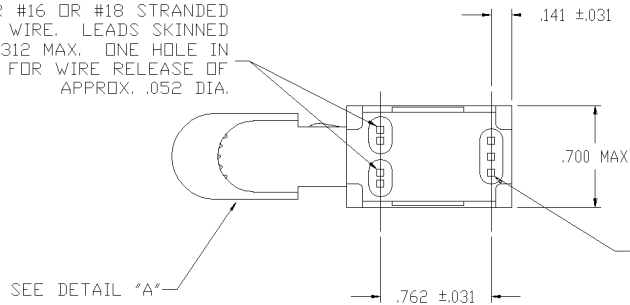
THIS DRAWING IS A CONTROLLED DOCUMENT.		DWN W. HANSON	27SEP95	<b>tyco</b> Electronics	Tyco Electronics Corporation Arab, AL 35016	
DIMENSIONS: INCHES		CHK T. CHRISTENSEN	27SEP95		NAME M.R. DUMMER	UTILITY TRIGGER TOOL HANDLE SWITCH WITH REVERSING
TOLERANCES UNLESS OTHERWISE SPECIFIED: 0 PLD ± - 1 PLD ± - 2 PLD ± - 3 PLD ± - 4 PLD ± - ANGLES ± - FINISH		APVD M.R. DUMMER	27SEP95	PRODUCT SPEC	APPLICATION SPEC	SIZE 12A 125 VAC / 6A 250 VAC / 14A 12 VDC
MATERIAL		WEIGHT		RESTRICTED TO	SCALE 1:1	SHEET 2 OF 10
-		-		CUSTOMER DRAWING	DRAWING NO. A2 00779 C-1520265	REV C

THIS DRAWING IS UNPUBLISHED. RELEASED FOR PUBLICATION  
 © COPYRIGHT BY TYCO ELECTRONICS CORPORATION. ALL RIGHTS RESERVED.

LOC		DIST		REVISIONS			
P	LTR	DESCRIPTION		DATE	OWN	APVD	
-	-	SEE SHEET 1		-	-	-	

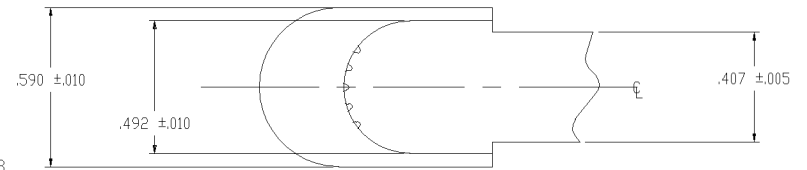


2 HOLES FOR #16 OR #18 STRANDED TIN DIPPED WIRE. LEADS SKINNED .250 MIN TO .312 MAX. ONE HOLE IN EACH RECESS FOR WIRE RELEASE OF APPROX. .052 DIA.



2 OUTER HOLES FOR #16 OR #18 STRANDED, TIN DIPPED WIRE. LEADS TO BE SKINNED .250 MIN TO .375 MAX. CENTER HOLE IS FOR WIRE RELEASE OF APPROX. .052 DIA.

1. LEAD STRIP LENGTH FOR REVERSING SWITCH TO BE .188 - .250.
2. 3 RECESSES IN BASE WILL ACCEPT MAX DIMENSION OF .120 DIA. (OVER INSULATION).



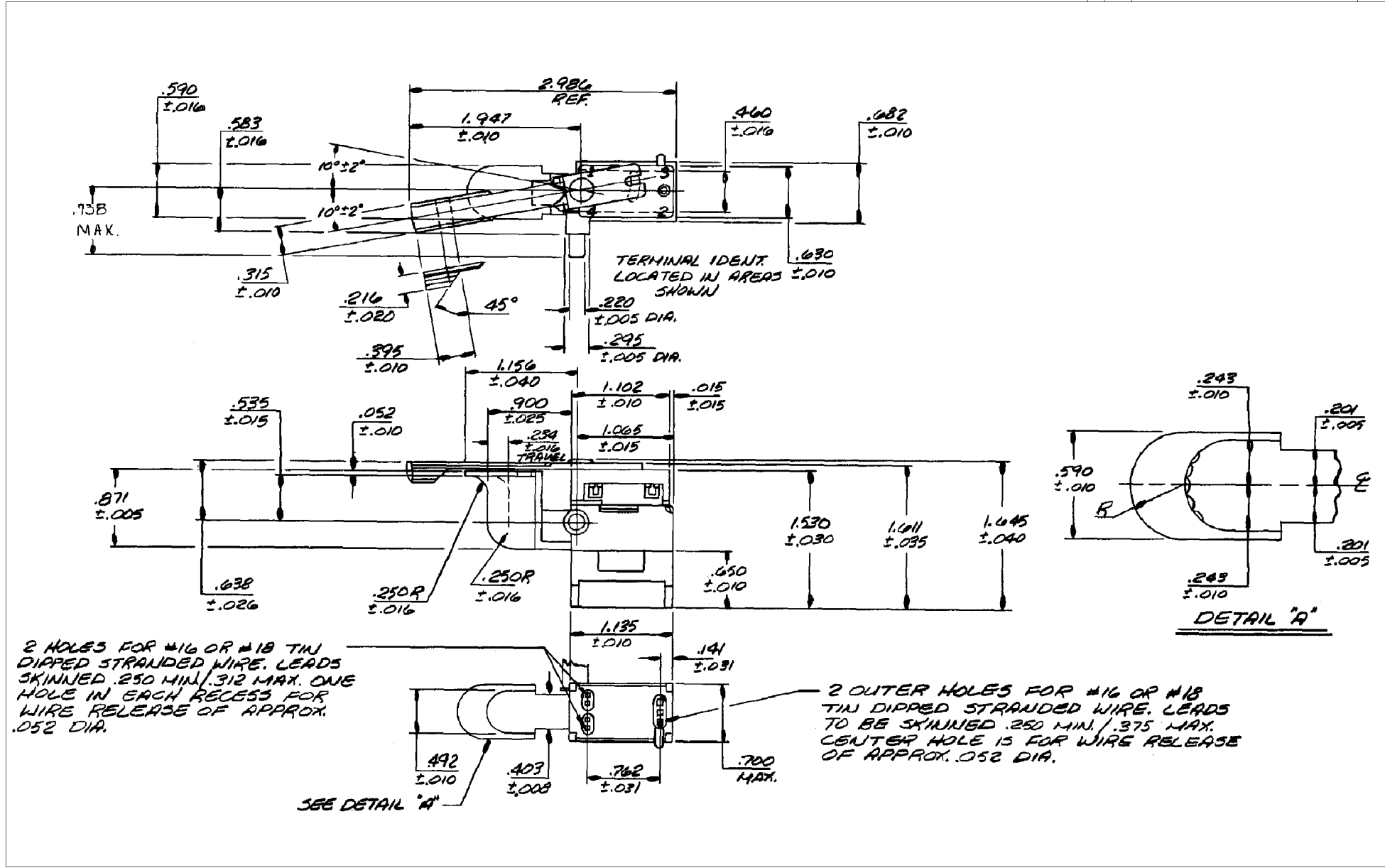
DETAIL A

TYCO NO. 1-1520265-6  
 (ARAB NO. 8907K7)

91-628

THIS DRAWING IS A CONTROLLED DOCUMENT.		DWN W. HANSON 27SEP95	Tyco Electronics Corporation Arab, AL 35016																					
DIMENSIONS: INCHES		CHK T. CHRISTENSEN 27SEP95																						
TOLERANCES UNLESS OTHERWISE SPECIFIED:		APVD M.R. DUMMER 27SEP95	NAME UTILITY TRIGGER TOOL HANDLE SWITCH WITH REVERSING (SPECIAL REVERSING LEVER) 6A 125 VAC / 3A 250 VAC																					
<table border="1"> <tr><td>0 PLD</td><td>±</td><td>-</td></tr> <tr><td>1 PLD</td><td>±</td><td>-</td></tr> <tr><td>2 PLD</td><td>±</td><td>-</td></tr> <tr><td>3 PLD</td><td>±</td><td>-</td></tr> <tr><td>4 PLD</td><td>±</td><td>-</td></tr> <tr><td>ANGLES</td><td>±</td><td>-</td></tr> <tr><td>FINISH</td><td>-</td><td>-</td></tr> </table>		0 PLD	±	-	1 PLD	±	-	2 PLD	±	-	3 PLD	±	-	4 PLD	±	-	ANGLES	±	-	FINISH	-	-	PRODUCT SPEC	RESTRICTED TO
0 PLD	±	-																						
1 PLD	±	-																						
2 PLD	±	-																						
3 PLD	±	-																						
4 PLD	±	-																						
ANGLES	±	-																						
FINISH	-	-																						
MATERIAL		APPLICATION SPEC	SIZE CAGE CODE DRAWING NO																					
-		WEIGHT	A2 00779 C-1520265																					
		CUSTOMER DRAWING	SCALE 1:1 SHEET 3 OF 10 REV C																					

LOC	DIST	REVISIONS					
AD	00	P	LTR	DESCRIPTION	DATE	DWN	APVD
		-	-	SEE SHEET 1		-	-



1. LEAD STRIP LENGTH FOR REVERSING SWITCH TO BE .250 +.032 -.016.
2. 3 RECESSES IN BASE WILL ACCEPT MAX DIMENSION OF .120 DIA. (OVER INSULATION).

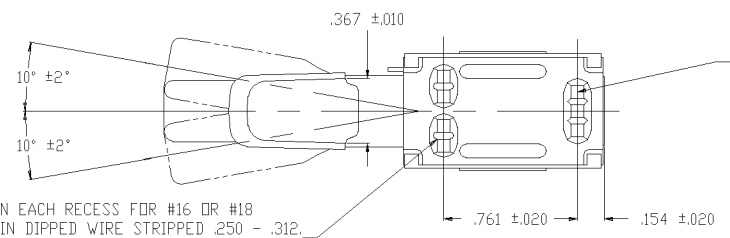
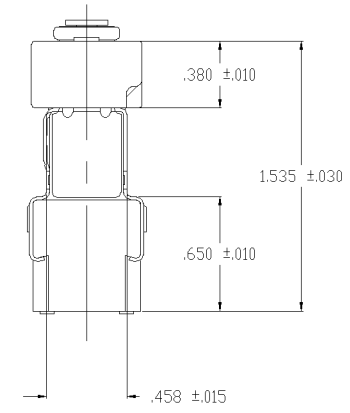
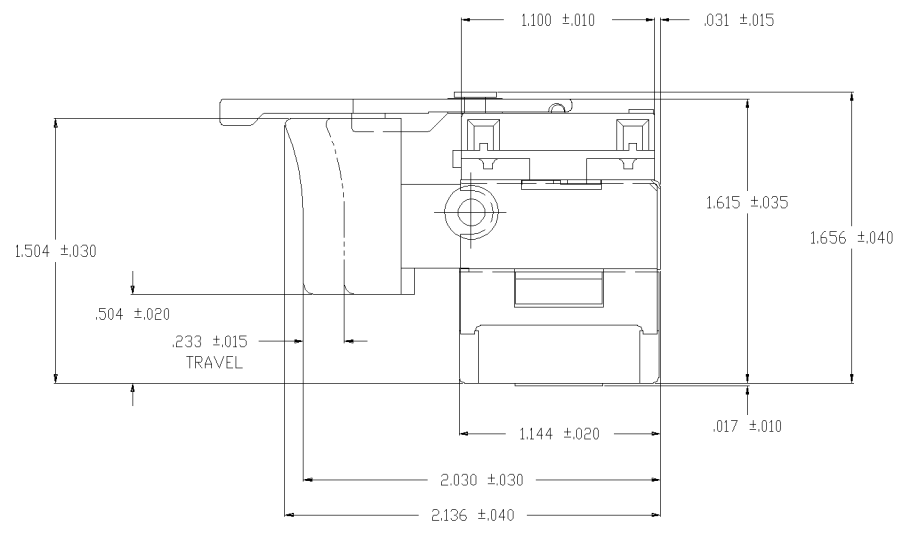
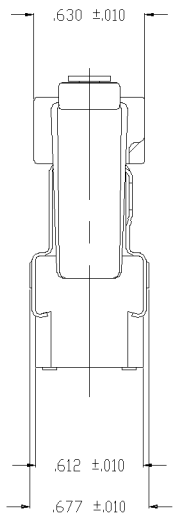
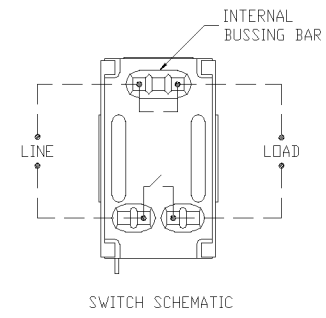
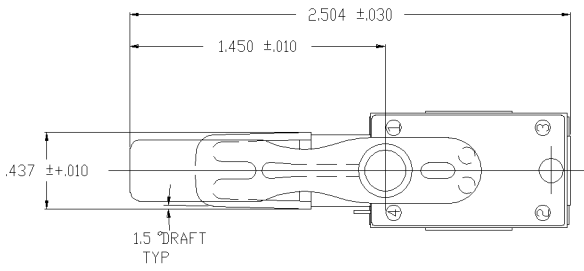
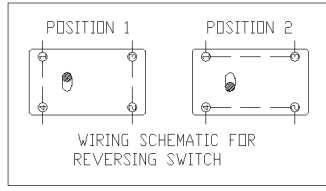
TYCO NO. 1520265-9 TYCO NO. 1-1520265-3 TYCO NO. 1-1520265-4  
 (ARAB NO. 8907K370) (ARAB NO. 8907K472) (ARAB NO. 8907K495)

90-11809

THIS DRAWING IS A CONTROLLED DOCUMENT.		DRW B. THOMPSON 12JAN83	 Tyco Electronics Corporation Arab, AL 35016														
		CHK B. THOMPSON 12JAN83															
DIMENSIONS: INCHES		APVD P. YANCEY 12JAN83	NAME UTILITY TRIGGER TOOL HANDLE SWITCH WITH REVERSING														
<table border="1"> <tr> <th>TOLERANCES UNLESS OTHERWISE SPECIFIED:</th> <th>FINISH</th> </tr> <tr> <td>0 PLC ± -</td> <td>-</td> </tr> <tr> <td>1 PLC ± -</td> <td>-</td> </tr> <tr> <td>2 PLC ± -</td> <td>-</td> </tr> <tr> <td>3 PLC ± -</td> <td>-</td> </tr> <tr> <td>4 PLC ± -</td> <td>-</td> </tr> <tr> <td>ANGLES ± -</td> <td>-</td> </tr> </table>		TOLERANCES UNLESS OTHERWISE SPECIFIED:	FINISH	0 PLC ± -	-	1 PLC ± -	-	2 PLC ± -	-	3 PLC ± -	-	4 PLC ± -	-	ANGLES ± -	-	PRODUCT SPEC APPLICATION SPEC	6A 125 VAC / 3A 250 VAC
TOLERANCES UNLESS OTHERWISE SPECIFIED:	FINISH																
0 PLC ± -	-																
1 PLC ± -	-																
2 PLC ± -	-																
3 PLC ± -	-																
4 PLC ± -	-																
ANGLES ± -	-																
MATERIAL		WEIGHT	RESTRICTED TO														
		A2 00779	SCALE 1:1 SHEET 4 OF 10 REV C														
		CUSTOMER DRAWING	DRAWING NO. C-1520265														

THIS DRAWING IS UNPUBLISHED. RELEASED FOR PUBLICATION  
 BY TYCO ELECTRONICS CORPORATION. ALL RIGHTS RESERVED.

LOC		DIST		REVISIONS			
P	LTR	DESCRIPTION	DATE	OWN	APVD		
AD	00	SEE SHEET 1					



ONE HOLE IN EACH RECESS FOR #16 OR #18 STRANDED TIN DIPPED WIRE STRIPPED .250 - .312.  
 ONE HOLE IN EACH RECESS FOR .052 DIA. WIRE RELEASE.

TWO OUTER HOLES FOR #16 OR #18 STRANDED TIN DIPPED WIRE STRIPPED .250 - .375.  
 CENTER HOLE FOR .052 DIA. WIRE RELEASE.

1. LEAD STRIP LENGTH FOR REVERSING SWITCH TO BE .250 +.032 -.016.
2. 3 RECESSES IN BASE WILL ACCEPT MAX DIMENSION OF .120 DIA. (OVER INSULATION).

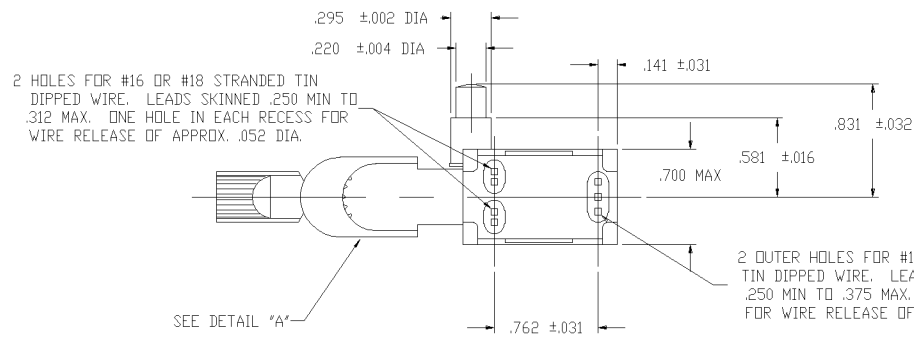
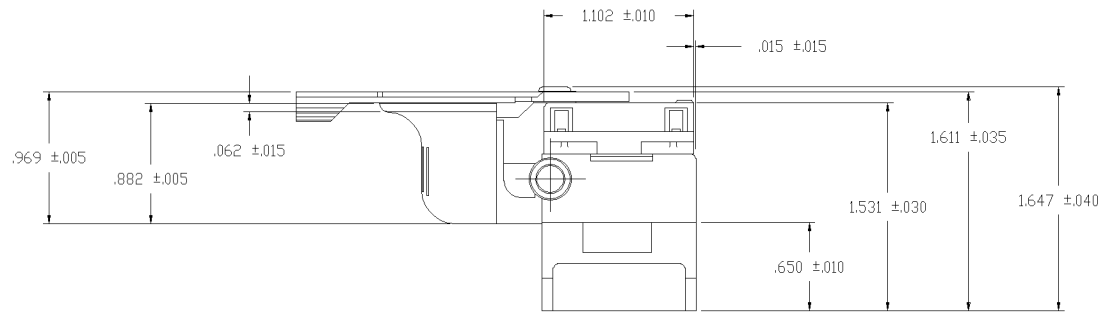
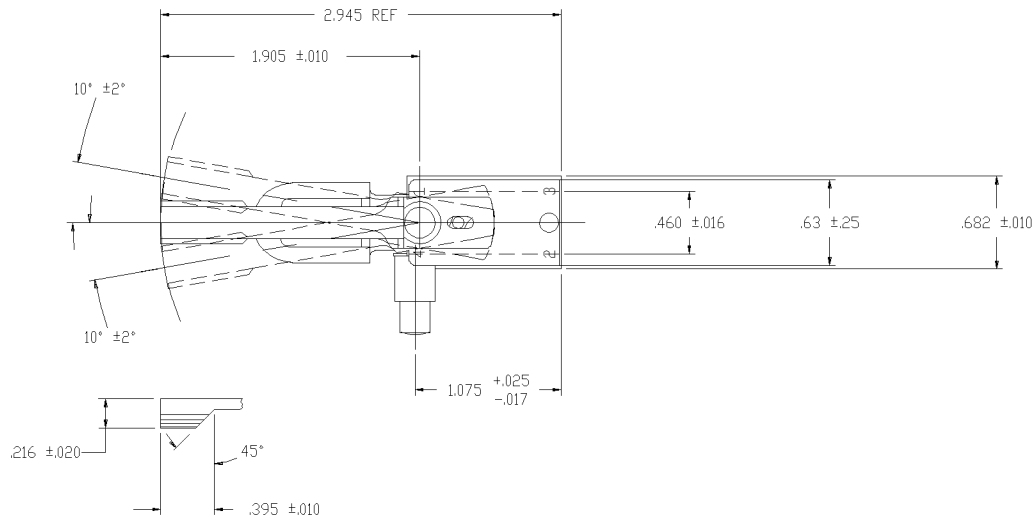
TYCO NO. 1520265-7  
 (ARAB NO. 8907K311)

90-15562

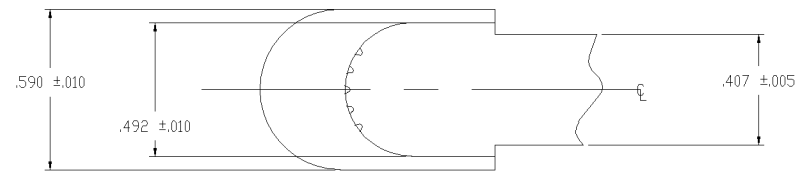
THIS DRAWING IS A CONTROLLED DOCUMENT.		DWN WESTEMEIER 06JUN90	<b>tyco</b> Electronics	Tyco Electronics Corporation	
DIMENSIONS: INCHES		CHK E. WESOLEK 07JUN90		Arab, AL 35016	
TOLERANCES UNLESS OTHERWISE SPECIFIED:		APVD E. WESOLEK 07JUN90	NAME		
0 PLC ±		PRODUCT SPEC	UTILITY TRIGGER TOOL HANDLE SWITCH WITH REVERSING		
1 PLC ±		APPLICATION SPEC	12A 125 VAC / 6A 250 VAC		
2 PLC ±		WEIGHT	SIZE	CAGE CODE	DRAWING NO
3 PLC ±		MATERIAL	A2	00779	1520265
4 PLC ±		FINISH	CUSTOMER DRAWING		RESTRICTED TO
ANGLES ±		SCALE 1:1		SHEET 5 OF 10	REV C

THIS DRAWING IS UNPUBLISHED.  
 RELEASED FOR PUBLICATION  
 BY TYCO ELECTRONICS CORPORATION. ALL RIGHTS RESERVED.

LOC	DIST	REVISIONS					
AD	00	P	LTR	DESCRIPTION	DATE	OWN	APVD
		-		SEE SHEET 1	-	-	-



1. LEAD STRIP LENGTH FOR REVERSING SWITCH TO BE .250 +.032 -.016.
2. 3 RECESSES IN BASE WILL ACCEPT MAX DIMENSION OF .120 DIA. (OVER INSULATION).



DETAIL A

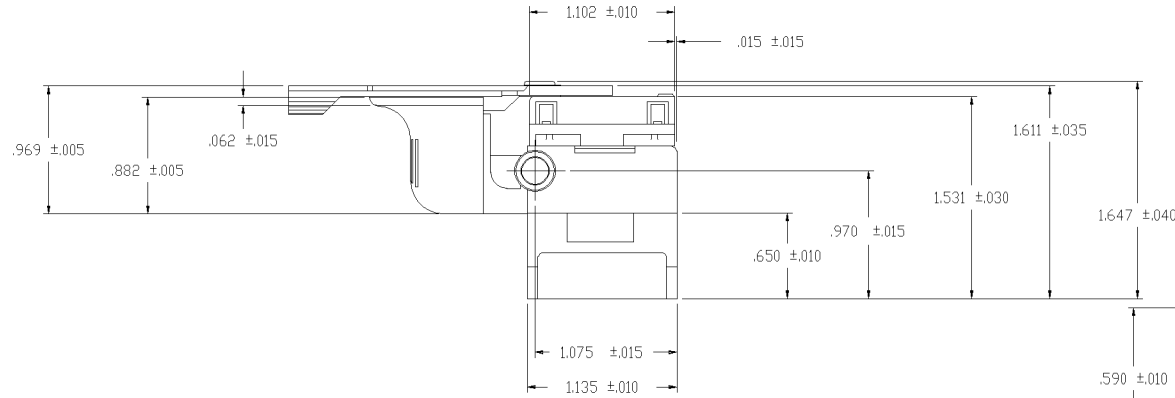
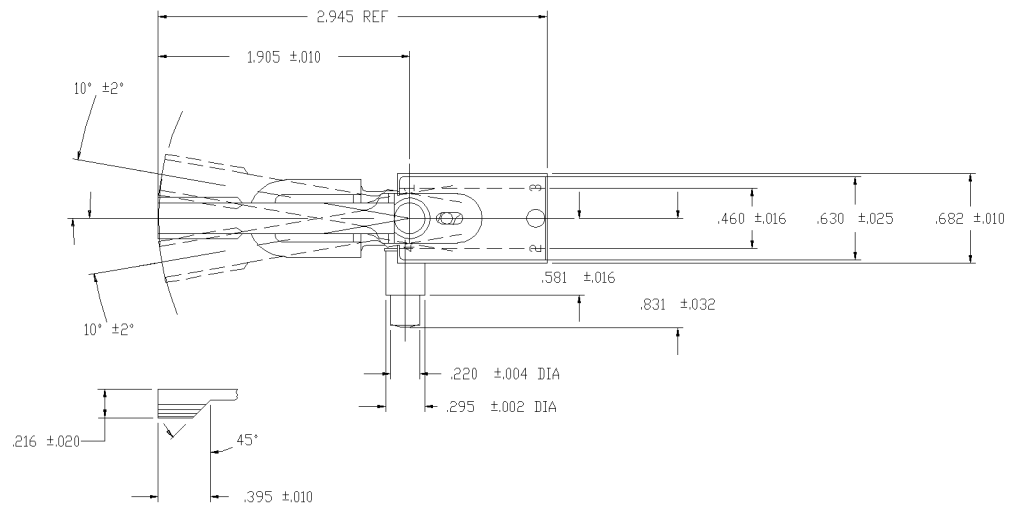
TYCO NO. 1520265-8  
 (ARAB NO. 8907K350)

91-602

THIS DRAWING IS A CONTROLLED DOCUMENT.		DWN W. HANSON 20OCT95 CHK W. Leonard 30OCT95 APVD M.R. DUMMER 30OCT95	<b>tyco</b> <b>Electronics</b> Tyco Electronics Corporation Arab, AL 35016
DIMENSIONS: INCHES 	TOLERANCES UNLESS OTHERWISE SPECIFIED: 0 PLC ± - 1 PLC ± - 2 PLC ± - 3 PLC ± - 4 PLC ± - ANGLES ± - FINISH -	NAME M.R. DUMMER PRODUCT SPEC APPLICATION SPEC WEIGHT -	UTILITY TRIGGER TOOL HANDLE SWITCH WITH REVERSING 12A 125 VAC / 6A 250 VAC SIZE CAGE CODE DRAWING NO A2 00779 C-1520265 RESTRICTED TO - SCALE 1:1 SHEET 6 OF 10 REV C
MATERIAL -		CUSTOMER DRAWING	

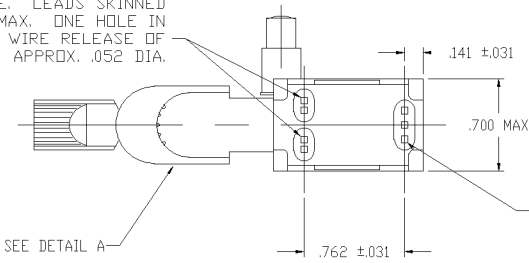
THIS DRAWING IS UNPUBLISHED. RELEASED FOR PUBLICATION  
 COPYRIGHT BY TYCO ELECTRONICS CORPORATION. ALL RIGHTS RESERVED.

LOC		DIST		REVISIONS			
P	LTR	DESCRIPTION	DATE	OWN	APVD		
-	-	SEE SHEET 1	-	-	-		

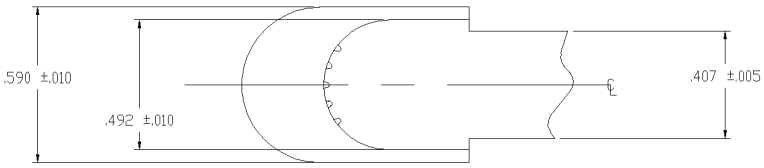


1. LEAD STRIP LENGTH FOR REVERSING SWITCH TO BE .250 +.032 -.016.
2. 3 RECESSES IN BASE WILL ACCEPT MAX DIMENSION OF .120 DIA. (OVER INSULATION).

2 HOLES FOR #16 OR #18 STRANDED TIN DIPPED WIRE. LEADS SKINNED .250 MIN TO .312 MAX. ONE HOLE IN EACH RECESS FOR WIRE RELEASE OF APPROX. .052 DIA.



2 OUTER HOLES FOR #16 OR #18 STRANDED, TIN DIPPED WIRE. LEADS TO BE SKINNED .250 MIN TO .375 MAX. CENTER HOLE IS FOR WIRE RELEASE OF APPROX. .052 DIA.



DETAIL A

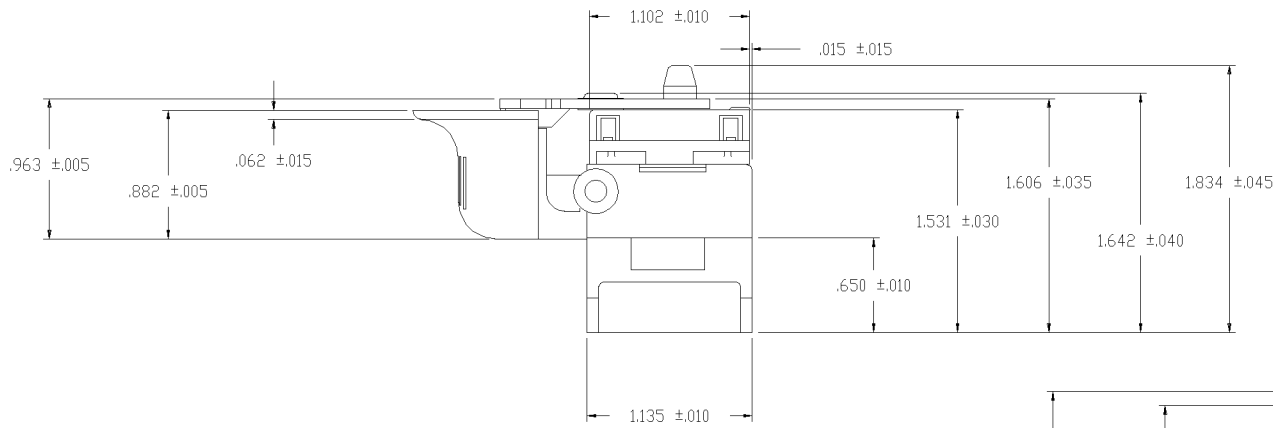
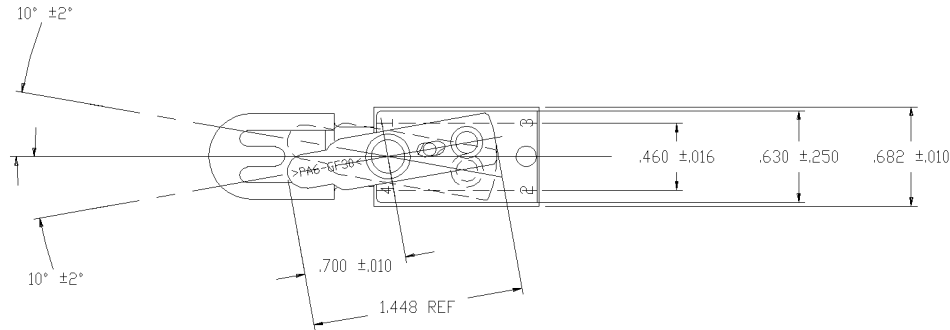
TYCO NO. 1520265-1  
(ARAB NO. 8332K6)

91-652

THIS DRAWING IS A CONTROLLED DOCUMENT.		DWN W. HANSON 07MAR86	<b>tyco</b> Electronics		Tyco Electronics Corporation Arab, AL 35016	
DIMENSIONS: INCHES		CHK T. CHRISTENSEN 07MAR86	NAME UTILITY TRIGGER TOOL HANDLE SWITCH WITH REVERSING			
TOLERANCES UNLESS OTHERWISE SPECIFIED:		APVD M.R. DUMMER 07MAR86	PRODUCT SPEC 12A 125 VAC / 6A 250 VAC / 14A 12 VDC			
0 PLC ± - 1 PLC ± - 2 PLC ± - 3 PLC ± - 4 PLC ± - ANGLES ± -		APPLICATION SPEC	SIZE A2	CAGE CODE 00779	DRAWING NO C-1520265	RESTRICTED TO
MATERIAL		WEIGHT	CUSTOMER DRAWING		SCALE 1:1	SHEET 7 OF 10

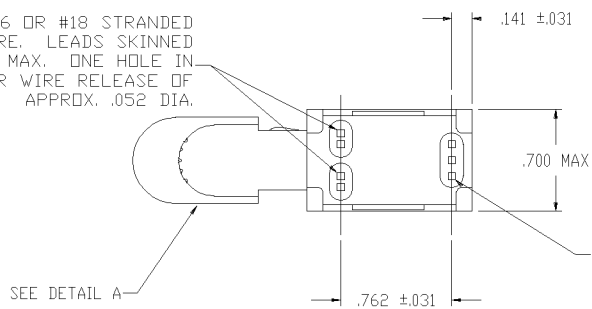
THIS DRAWING IS UNPUBLISHED. RELEASED FOR PUBLICATION  
 © COPYRIGHT BY TYCO ELECTRONICS CORPORATION. ALL RIGHTS RESERVED.

LOC	DIST	REVISIONS					
AD	00	P	LTR	DESCRIPTION	DATE	OWN	APVD
		-		SEE SHEET 1			

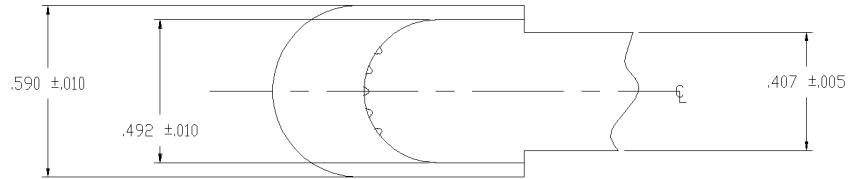


1. LEAD STRIP LENGTH FOR REVERSING SWITCH TO BE .250 +.032 -.016.
2. 3 RECESSES IN BASE WILL ACCEPT MAX DIMENSION OF .120 DIA. (OVER INSULATION).

2 HOLES FOR #16 OR #18 STRANDED TIN DIPPED WIRE. LEADS SKINNED .250 MIN TO .312 MAX. ONE HOLE IN EACH RECESS FOR WIRE RELEASE OF APPROX. .052 DIA.



2 OUTER HOLES FOR #16 OR #18 STRANDED, TIN DIPPED WIRE. LEADS TO BE SKINNED .250 MIN TO .375 MAX. CENTER HOLE IS FOR WIRE RELEASE OF APPROX. .052 DIA.



DETAIL A

TYCO NO. 1-1520265-5  
(ARAB NO. 8907K56)

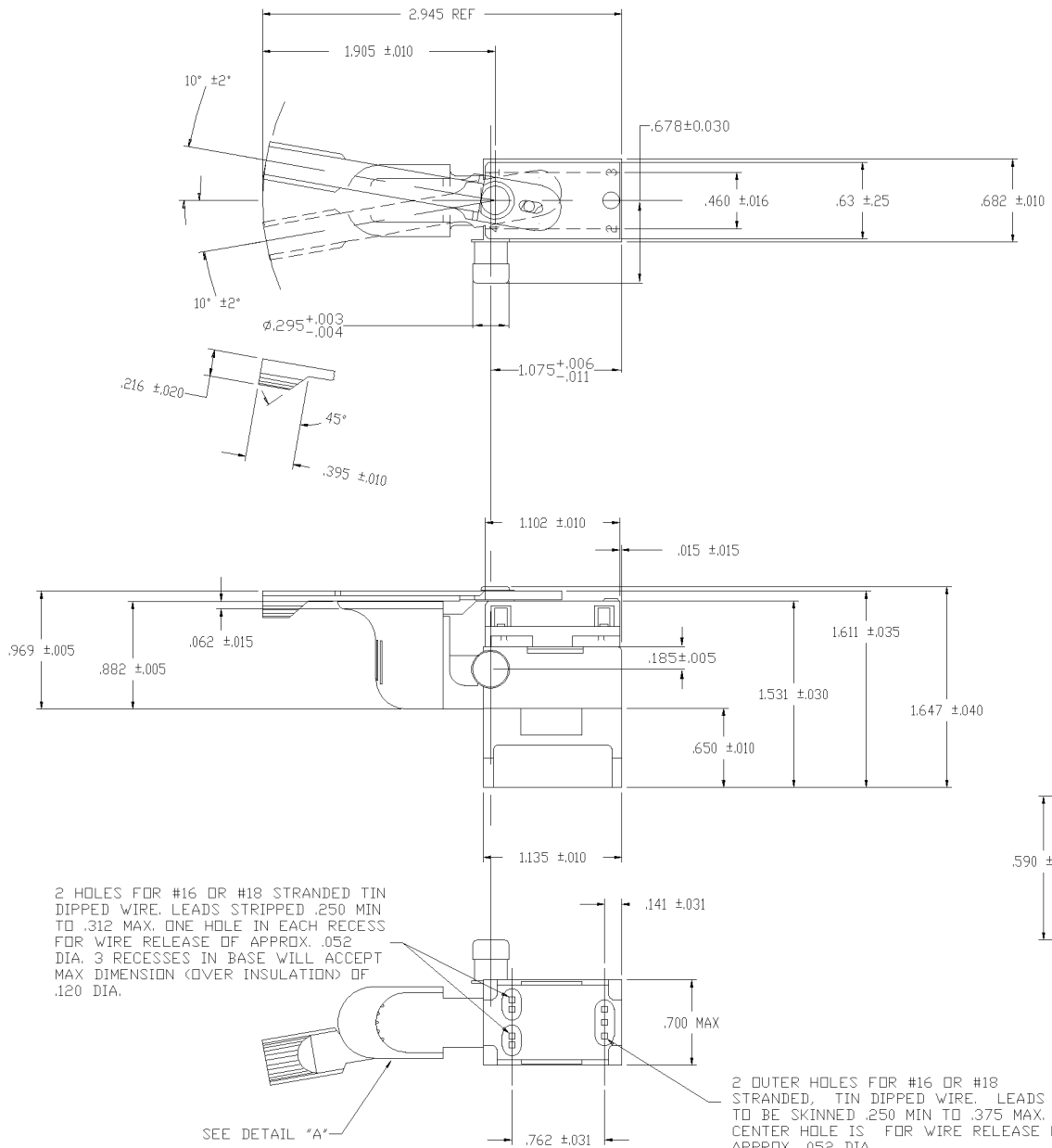
91-759

THIS DRAWING IS A CONTROLLED DOCUMENT.		DWN L. CHRISTENSEN 28OCT96	<b>tyco</b> Tyco Electronics Corporation	
DIMENSIONS: INCHES		CHK W. HANSON 31OCT96	Arab, AL 35016	
TOLERANCES UNLESS OTHERWISE SPECIFIED:		APVD M.R. DUMMER 05NOV96	NAME UTILITY TRIGGER TOOL HANDLE SWITCH WITH REVERSING (SPECIAL REVERSING LEVER)	
0 PLC ± -	1 PLC ± -	PRODUCT SPEC	14A 12 VDC	
2 PLC ± -	3 PLC ± -	APPLICATION SPEC	SIZE A2	CAGE CODE 00779
4 PLC ± -	ANGLES ± -	WEIGHT	DRAWING NO C-1520265	RESTRICTED TO
MATERIAL		FINISH	SCALE 1:1	SHEET 8 OF 10
		CUSTOMER DRAWING	REV C	



THIS DRAWING IS UNPUBLISHED. RELEASED FOR PUBLICATION  
 © COPYRIGHT BY TYCO ELECTRONICS CORPORATION. ALL RIGHTS RESERVED.

LOC		DIST		REVISIONS			
P	LTR	DESCRIPTION	DATE	OWN	APVD		
C		SEE SHEET 1	-	-	-		

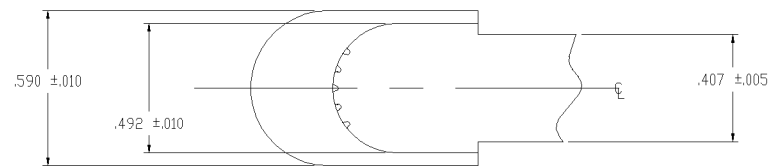


2 HOLES FOR #16 OR #18 STRANDED TIN DIPPED WIRE. LEADS STRIPPED .250 MIN TO .312 MAX. ONE HOLE IN EACH RECESS FOR WIRE RELEASE OF APPROX. .052 DIA. 3 RECESSES IN BASE WILL ACCEPT MAX DIMENSION (OVER INSULATION) OF .120 DIA.

2 OUTER HOLES FOR #16 OR #18 STRANDED, TIN DIPPED WIRE. LEADS TO BE SKINNED .250 MIN TO .375 MAX. CENTER HOLE IS FOR WIRE RELEASE OF APPROX. .052 DIA.

SEE DETAIL "A"

1. LEAD STRIP LENGTH FOR REVERSING SWITCH TO BE .250 +.032 -.016.



DETAIL A

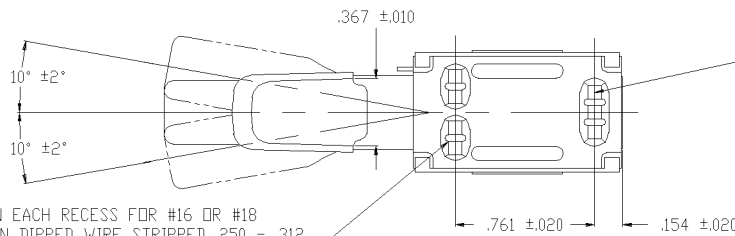
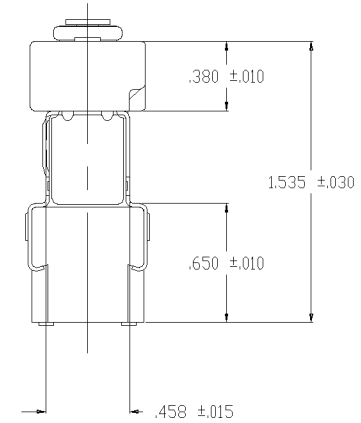
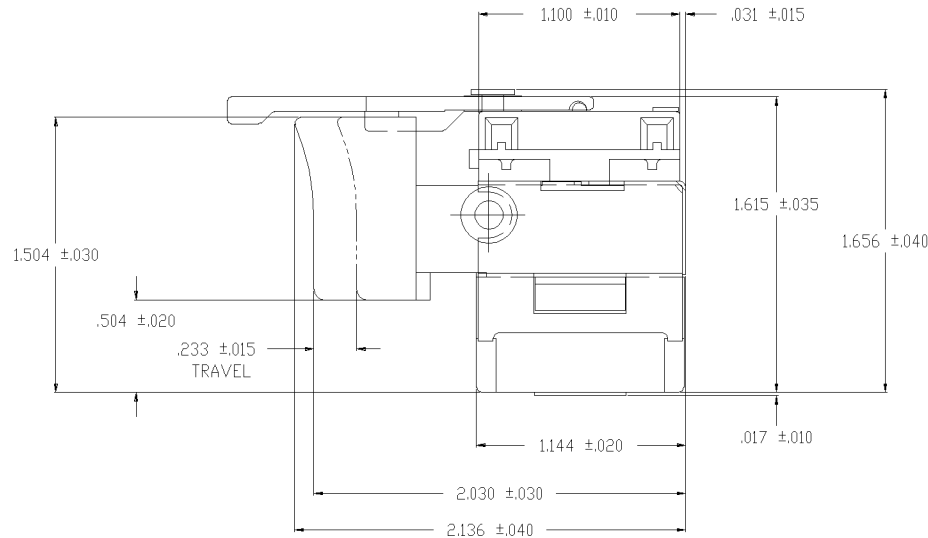
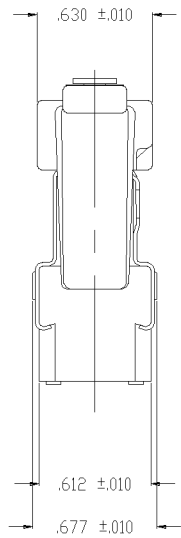
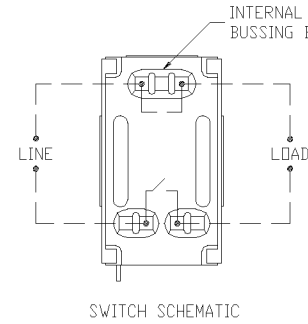
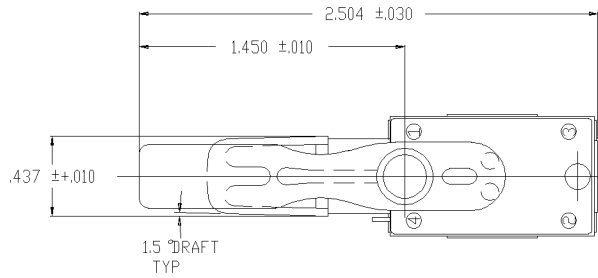
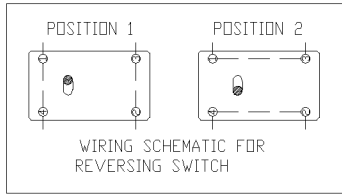
TYCO NO. 1-1520265-0  
 (ARAB NO. 8907K411)

91-16243

THIS DRAWING IS A CONTROLLED DOCUMENT.		DWN W. Leonard	25FEB00	<b>tyco</b> Electronics	Tyco Electronics Corporation Arab, AL 35016	
DIMENSIONS: INCHES		CHK T. CHRISTENSEN	25FEB00		NAME UTILITY TRIGGER TOOL HANDLE SWITCH WITH REVERSING & DUMMY LOCK PIN 12A 125 VAC / 6A 250 VAC	
TOLERANCES UNLESS OTHERWISE SPECIFIED:		APVD M. WARDRUP	25FEB00	PRODUCT SPEC		
0 PLC ± -		APPLICATION SPEC		SIZE	CAGE CODE	DRAWING NO
1 PLC ± -		MATERIAL		A2	00779	C-1520265
2 PLC ± -		FINISH		WEIGHT	RESTRICTED TO	
3 PLC ± -		CUSTOMER DRAWING		SCALE	1:1	SHEET 9 OF 10
4 PLC ± -		SCALE		1:1	SHEET	9 OF 10
ANGLES ± -		REV		C		

THIS DRAWING IS UNPUBLISHED. RELEASED FOR PUBLICATION  
 BY TYCO ELECTRONICS CORPORATION. ALL RIGHTS RESERVED.

LOC	DIST	REVISIONS			
P	LTR	DESCRIPTION	DATE	OWN	APVD
AD	00	C	SEE SHEET 1	-	-



TWO OUTER HOLES FOR #16 OR #18 STRANDED TIN DIPPED WIRE STRIPPED .250 - .375. CENTER HOLE FOR .052 DIA. WIRE RELEASE.

ONE HOLE IN EACH RECESS FOR #16 OR #18 STRANDED TIN DIPPED WIRE STRIPPED .250 - .312. ONE HOLE IN EACH RECESS FOR .052 DIA. WIRE RELEASE.

1. LEAD STRIP LENGTH FOR REVERSING SWITCH TO BE .250 +.032 -.016.
2. 3 RECESSES IN BASE WILL ACCEPT MAX DIMENSION OF .120 DIA. (OVER INSULATION).

91-475

TYCO NO. 1-1520265-1  
(ARAB NO. 8907K417)

THIS DRAWING IS A CONTROLLED DOCUMENT.		DWN W. HANSON	29APR84	<b>tyco</b> Electronics	Tyco Electronics Corporation Arab, AL 35016	
DIMENSIONS: INCHES		CHK W. Leonard	03MAY94		NAME	UTILITY TRIGGER TOOL HANDLE SWITCH WITH REVERSING
TOLERANCES UNLESS OTHERWISE SPECIFIED:		APVD E. WESOLEK	03MAY94	PRODUCT SPEC	12A 125 VAC / 6A 250 VAC	
0 PLC ± - 1 PLC ± - 2 PLC ± - 3 PLC ± - 4 PLC ± - ANGLES ± - FINISH		APPLICATION SPEC		SIZE	CAGE CODE	DRAWING NO
MATERIAL		WEIGHT		A2	00779	C=1520265
		CUSTOMER DRAWING	SCALE	1:1	SHEET	10 OF 10
						REV B